



MENU

www.sapanavillage.com

Dear guest,

Welcome to Sapana Village Lodge. We hope you have a great time staying with us. We will do everything we can to make it an unforgettable experience.

Sapana means ' Dreams ' in Nepali. Sapana Village not only lets your dreams come true, but also those of the local community. Sapana Village Lodge is a small scale development project, which aims to support the local community. With the profit of the lodge we initiate projects in the neighbourhood.

Our projects aim is to preserve the local culture, improve health care and education and provide microfinance to start up small businesses.

With projects like the Sapana Women Skill Development Project, the future Sapana School and medical post, our Tharu preservation projects, hygiene projects at local schools and medical checks for children each year, we try and help the local community. By visiting Sapana Lodge you support our goals.

We hope you enjoy your time here with us. If you have any questions, please feel free to ask them or just stop by for a casual chat. We are looking forward to meeting you.

Warm regards,

The Sapana team



Please note we officially have to separately charge an extra 10 % service charge on your restaurant bill and 13 % government taxes on your restaurant and program bill.

Start of the Day - Breakfast

Set breakfast

An Englishman in Chitwan

Two eggs of your style, toast, butter, jam & honey,
hash brown potatoes, fried sausage, grilled tomato

Nescoffee or tea----- **Rs.415**

Sapana breakfast

Egg as you prefer, toast, butter, jam & honey,
fresh seasonal fruit juice, yoghurt with cashewnut

Nescoffee or tea----- **Rs.480**

Sapana healthy start

Fresh seasonal fruit salad with yoghurt & honey

Nescoffee or tea----- **Rs.305**

Local Tharu house breakfast

Mixed vegetable curry, pickles, poori or plain paratha

(local bread of wheat flour)

Masala tea----- **Rs.295**



Extra : 10 % service charge & 13 % government tax

Pancake

Tharu Cottage Cheese Pancake (Wheat flour, cheese, vanilla and egg's white only)-----	Rs.255
Lemon & sugar pancake-----	Rs.155
Mixed seasonal fruit pancake-----	Rs.195
Chocolate paste pancake-----	Rs.200
Honey pancake-----	Rs.155

Porridge

Porridge with banana & cinnamon-----	Rs.170
Porridge with mixed fruit-----	Rs.205

Muesli

Muesli with seasonal fruit, yogurt & honey-----	Rs.295
Muesli with yogurt & honey-----	Rs.205

Yogurt

Plain yogurt-----	Rs.125
Fresh yogurt, seasonal fruit and chapati-----	Rs.170
Fresh yogurt, honey & cashewnut-----	Rs.220

Eggs

Scrambled egg w/toasts-----	Rs.195
Cheese omelette w/toasts-----	Rs.215
Vegetable omelette w/toasts-----	Rs.195
Boiled eggs 2 pieces w/toast-----	Rs.165

Toast

Toast with jam & butter or honey-----	Rs.140
Toast with peanut butter-----	Rs.145
Toast with chocolate paste-----	Rs.145
French toast with honey-----	Rs.165



Extra : 10 % service charge & 13 % government tax

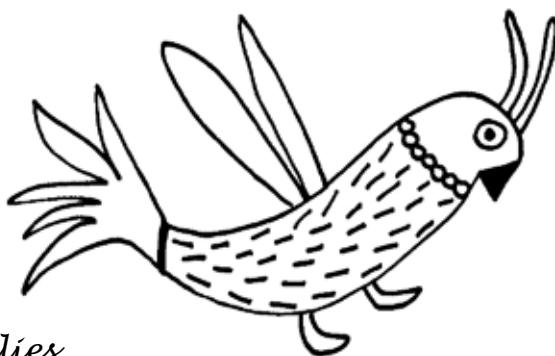
Appetizers - Snacks

Momo

Vegetable momo (10 pieces)-----	Rs.255
Chicken momo (10 pieces)-----	Rs.315
Cheese potato momo (10 pieces)-----	Rs.285

Potato item

French fries-----	Rs.175
Potato cheese ball-----	Rs.290
Alu bujiya-----	Rs.190
Roasted potato-----	Rs.195
Vegetable & cheese fried pakauda-----	Rs.250



Chillies

Paneer-----	Rs.395
Chicken-----	Rs.395
Beef chillies-----	Rs.395
Fish chillies-----	Rs.485

Bread

Butter garlic naan-----	Rs.150
Garlic cheese naan-----	Rs.150
Paratha pickles & yogurt-----	Rs.190
Chapati with pickles-----	Rs.155

Dine in Style - Lunch & dinner

Homemade soups (served with garlic bread)

Fresh tomato soup -----	Rs.195
Vegetable & noodle soup -----	Rs.215
Chicken & mushroom soup -----	Rs.260
French onion soup-----	Rs.215
Garlic soup-----	Rs.215

Fresh salad

Salade Niçoise (with tuna & olive) -----	Rs.295
Spanish style salad (tomato & spinach)-----	Rs.265
Seasonal mixed vegetable salad-----	Rs.235
Chicken curry salad (served with chapati)-----	Rs.345

Grilled sandwiches (served with a side salad)

Vegetable & chicken -----	Rs.315
Vegetable & cheese -----	Rs.295
Cheese & tomato-----	Rs.280
Tuna fish-----	Rs.305



Extra : 10 % service charge & 13 % government tax

Choice of the day

Sapana kitchen special (*surprise*)----- **Rs.675**

Fish (served with vegetable, chips or rice)

Grilled fish-----**Rs.555**

Fish in lemon sauce-----**Rs.575**

Chicken (served with vegetable, chips or rice)

Grilled chicken with B.B.Q sauce-----**Rs.565**

Chicken sizzler-----**Rs.655**

Chicken in cashewnut sauce-----**Rs.515**

Chicken stroganoff-----**Rs.575**

Chicken enchilada with salad-----**Rs.455**

Beef (served with vegetable, chips or rice)

Beef sizzler-----**Rs.695**

Steak with onion & mushroom sauce -----**Rs.575**

Steak with pineapple & curry sauce-----**Rs.595**

Rice and noodle

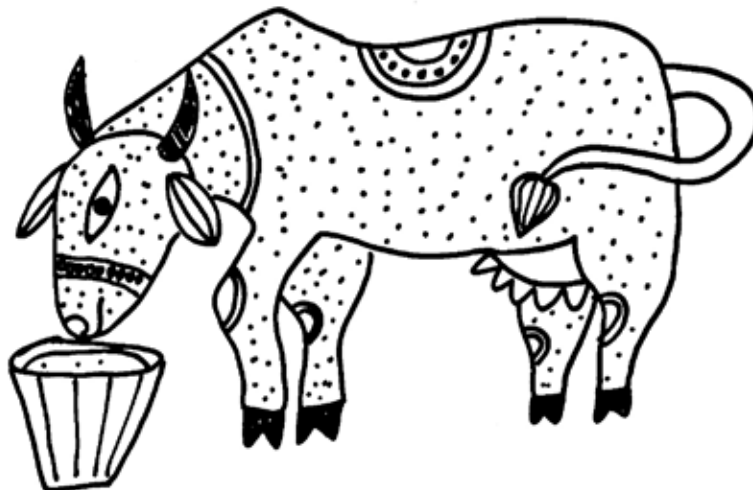
Plain rice-----**Rs.150**

Vegetarian fried rice -----**Rs.315**

Chicken fried rice-----**Rs.465**

Vegetarian mixed noodles-----**Rs.315**

Chicken noodles-----**Rs.465**



Extra : 10 % service charge & 13 % government tax

Local special dishes

Nepali dal bath tarkari -----Rs.445

Tharu cheechar with mixed vegetable curry
(Rice wrapped in jungle leaf served with curry)-----Rs.495

Nepali festival dish
(Gundruk soup, vegetable curry, lentil sauce, chicken curry,
crispy papadam, pickle, white rice, dessert) -----Rs.605



Curry (served with rice or chapati)

Vegetable curry----- Rs.285

Paneer curry----- Rs.425

Chicken curry-----Rs.415

Chicken butter masala-----Rs.425

Fish curry-----Rs.495

Vegetarian (served with rice or chapati)

Cauliflower cheese sauce -----Rs.295

Paneer korma-----Rs.465

Paneer butter masala-----Rs.475

Sapana organic vegetable -----Rs.415

Nepali enchilada (tomato, beans, mushroom, vegetable)--Rs.405

Spaghetti cheese sauce & olive-----Rs.350

Mari's spaghetti, tomato sauce, cheese & olive-----Rs.360

Dessert

Sapana special curd (yogurt coconut, cashewnut, honey & cinnamon)-----	Rs.205
Plain yoghurt-----	Rs.125
Hot chocolate cream with side cookies-----	Rs.225
Pancake with chocolate paste & grilled nut topped	Rs.215
Seasonal fresh fruit salad-----	Rs.195
Banana fritters-----	Rs.155
Banana flambé-----	Rs.160
Ice cream 2 cups with side cookies-----	Rs.155



Extra : 10 % service charge & 13 % government tax

Beverages



Hot drink

Black tea-----	Rs.35
Lemon tea-----	Rs.45
Ginger tea-----	Rs.45
Hot lemon with ginger & honey-----	Rs.70
Fresh garden mint tea (<i>seasonal tea</i>) -----	Rs.75
Milk tea -----	Rs.55
Hot milk glass-----	Rs.75
Masala tea – Nepali tea-----	Rs.90
Nescoffee (<i>black or milk</i>)-----	Rs.65

Cold drink

Mineral water (<i>bottle</i>)-----	Rs.45
Coke/Fanta/Sprite-----	Rs.55
Diet coke(<i>imported</i>)-----	Rs.145
Tonic (<i>imported</i>)-----	Rs.125
Ice lemon tea-----	Rs.115
Ice peach tea -----	Rs.115
Plain Soda-----	Rs.55
Fresh lemonate with lemon-----	Rs.120
Fresh mint lemonate-----	Rs.145

Juice

Fresh Seasonal fruit juice-----	Rs.210
Mango/orange/apple/pineapple(<i>can</i>)-----	Rs.175

Lassies (Nepali shake made from local yoghurt)

Plain-----	Rs.130
Banana-----	Rs.165
Chocolate or coffee-----	Rs.185
Vanilla-----	Rs.155
Mixed fruit -----	Rs.195

Coffee Menu



Hot coffee beverages

Espresso -----Rs.100

A very strong coffee brewed rapidly one ounce at a time.

Doppio-----Rs.125

Two shot of espresso.

Espresso Macchiato-----Rs.125

Serving of espresso with thick velvet foam.

Espresso Con-Panna-----Rs.135

Serving of espresso with freshly whipped cream.

Americano-----Rs.125

Espresso with hot water, simply the best.

Americano Royale -----Rs.155

Americano served with flavour, topped with whipped cream and garnished.

Cappuccino-----Rs.155

Serving of espresso with equal parts of milk and foam.

Café Latte-----Rs.165

Serving of espresso with steam creamy milk and foam.

Honey Latte-----Rs.185

Try our version of this classic drink.

Caramel Latte-----Rs.255

Serving of espresso with rich creamy caramel, steam milk, foam and drizzle of caramel.

Café Mocha -----Rs.215

Espresso served with chocolate, milk and topped with whipped cream.

Cold coffee beverages

Iced Cappuccino/ Iced latte-----Rs.125

Our freshly pulled espresso and foam poured with cold milk over ice.

Iced Americano-----Rs.155

Shot of espresso over chilled water and ice.

Iced coffee-----Rs.125

Serving of espresso with chilled milk and poured over ice.

Blended coffee-----Rs.185

Chilled freshly brewed coffee blended over ice.

BlendedMocha-----Rs.225

Espresso hot blended over ice with chocolate and topped with whipped cream ,garnished with chocolate stick and coffee beans.

Alcoholic Beverages

Beer (bottle 650ml)-----Rs.365

Glass (60 ml)

Rhum/vodka/gin-----Rs.255

Balleys-----Rs.495

Johnny walker red label whisky-----Rs.465

Nepali whiskey -----Rs.425

Black label -----Rs.605

Local Raksi (rice wine)-----Rs.145



Cocktails

Cola tic -----Rs.315

Coke, rhum

Vodka Collin-----Rs.320

Vodka, lemon, juice, soda

A Tharu hand-----Rs.335

Vodka, mango juice, orange juice, tonic, honey, cinnamon

Gin Fizz-----Rs.285

Gin, lemon juice, honey, soda

Sapana punch-----Rs.345

Rhum, pineapple & orange juice, honey, cinnamon, tonic

Kiss me quick-----Rs.375

Gin, tonic, orange juice, pineapple juice, cinnamon

Rhino horn-----Rs.315

Rhum, pineapple juice, orange juice, cinnamon

Sapana smile-----Rs.325

Vodka, mixed fruit juice

Sapana sunset-----Rs.310

Vodka, lemon, orange squash

Extra : 10 % service charge & 13 % government tax

Wines

White selection

Glass Bottle

Sauvignon Blanc Sula - India -----Rs.395 Rs.1985
Dry wine with tropical fruits flavors

Chemin blanc Sula - India-----Rs.395 Rs.1985
Semi-dry in style, with pineapple aromas

Sauvignon Collin bourisset - France-----Rs.395 Rs.1985
Dry wine with grass aromas

Riesling Michel Schneider - Germany-----Rs.395 Rs.1985
Sweet wine for dessert

Chardonnay Boccantino - Italy-----Rs.395 Rs.1985
Elegant and well balanced wine

Chardonnay Reserva Sol de Chile -----Rs.395 Rs.1985
Pleasant wine with smooth taste

Chardonnay Kingstone - Australia-----Rs.395 Rs.1985
Dry wine with refreshing flavors



Red selection

Zinfandel Sula - India-----Rs.495 Rs.2015
Elegant wine ripe plum flavors

Cabernet Shiraz Sula - India-----Rs.495 Rs.2015
Medium bodied wine with smoky notes

Gamay Syrah Collin Bourisset - France---Rs.495 Rs.2015
Dry wine with smooth aromas

Shiraz DB selection - Australia-----Rs.495 Rs.2015
Fruity wine with sweet tannins

Montepulciano d'Abruzzo - Italy-----Rs.495 Rs.2015
Light wine with red fruit aromas

Extra : 10 % service charge & 13 % government tax

What is that ?

Alu bhujija : is often simply called Bhujia is a popular crispy snack and is prepared by using besan (gram flour) and spices and potato.

Chapati or roti : is an unleavened flatbread made from a firm dough made from flour and water .

Dal bhat : is a traditional meal which is popular in many areas of Nepal. It consists of steamed rice and a cooked lentil soup called dal. Dal bhat is often served with vegetable tarkari : a mix of available seasonal vegetables and pickles.

Gundruk : is a typical Nepali fermented leafy green vegetables of radish, cauliflower or roots of radish.

Masala tea : is a flavoured tea beverage made by brewing black tea with a mixture of aromatic spices and herbs, mixed all together with milk.

Pakoda : is made from a mix of finely cut onions, green chillies, potato or vegetable and spices mixed in gram flour. This is rolled into small balls or sprinkled straight in hot oil and fried. Pakodas are very crisp on the outside and medium soft to crisp inside.

Paneer : is an unaged, acid-set, non-melting farmer cheese that is similar to acid-set fresh mozzarella and queso blanco, except that it does not have salt added, much like hoop cheese.

Papadam : is a thin, crisp disc-shaped food typically based on a seasoned dough made from black gram, fried or cooked with dry heat. Papadams are typically served as an accompaniment to a meal, as an appetizer or snack.

Pickles, achar or chutney : are vegetables marinated and eaten in small amounts to add flavor to meal. It can both be fresh or aged. Pickles can be eaten with everything.

Plain paratha : is a flatbread made by pan frying whole wheat dough.

Poori : is a fried bread made from wheat flour.





*All prices don't include 10 % service charge and 13% tax, thank you.
All designs in this menu are not free of rights.
Design by Marie D.C for Sapana Village Lodge. ©*

SAPANA VILLAGE LODGE
SAURHA CHITWAN NEPAL
WWW.SAPANALODGE.COM
INFO@SAPANALODGE.COM
+ 977 (0) 56 58 03 08